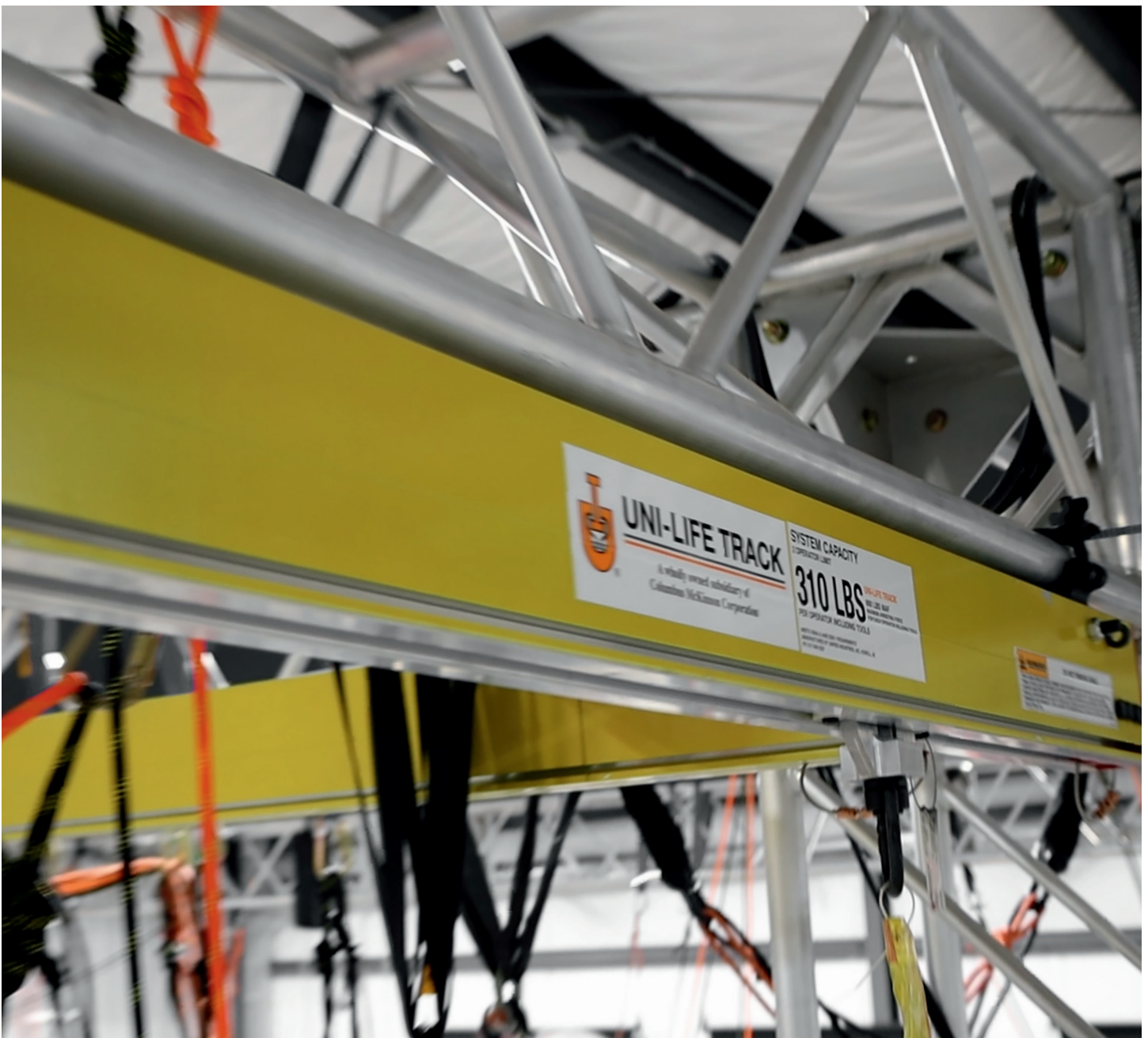


Uni-Life Track™

FALL PROTECTION SYSTEM



FEATURES AND BENEFITS

When you need to safeguard operators from accidental slips and falls in elevated work areas, Columbus McKinnon's Uni-Life Track™ Fall Protection System is designed for both permanent and temporary applications.

Available from our Unified Industries brand, Uni-Life Track is designed for fall arrest when working at height. It can also be used for work positioning and targeted access, allowing a person to ascend and descend to a specific area easily and safely. These systems can be used in industrial applications or paired with truss for the entertainment industry.

INCREASED EFFICIENCY

- Uni-Life Track has multiple connection points, allowing for more workers along the length of the system, helping to reduce the time it takes to complete the job.
- System provides a high level of mobility allowing the system to be used for longer continuous spans than a cable fall protection system.

PROFILE	TWO WORKERS MAX SPAN (FT)
ETA-5	10
ETA-5 CHANNEL CAP	14
ETA-5 STRONGBACK	16
ETA-8	20
ETA-8 CHANNEL CAP	26
ETA-8 STRONGBACK	28
ETA-8 W6 I-CAP	35

REDUCED FALL CLEARANCE

- Particularly in low-headroom situations, Uni-Life Track's fixed anchorage system is preferred over a wire rope system as it does not need to account for sag in the event of a fall.
- Without sag, the system reduces the fall clearance, which decreases the force on the worker should they fall, as well as the likelihood of secondary injury.

SIMPLIFIED RESCUE

- When the assisted rescue of an incapacitated worker is required, the rescuer can access the fallen worker using a second trolley on the Uni-Life system or perform a remote rescue with an extension pole from a safe position.
- System limits freefall and deceleration distances, increasing the potential for self-rescue. The trolley braking system reduces uncontrolled lateral motion, which positions the fallen worker closer to the area they fell from, making it easier for them to access the platform or area they fell from to perform a self-rescue.

LESS CHANCE OF SECONDARY INJURY

- System provides a solid, stable anchorage between two or more endpoints.
- Should the worker fall, the Uni-Life Track trolley will immediately stop, reducing the risk of the worker swinging on the line, which helps minimize the risk of secondary injury from the initial fall.

LESS FREQUENT SYSTEM REPLACEMENT

- If a fall occurs, the trolley and other system components can be inspected and put back into use if no damage has occurred, greatly reducing system downtime.

COMPLIES WITH INDUSTRY STANDARDS

The system meets or exceeds requirements for an engineered anchorage, for use with compatible Personal Fall Arrest Systems and Industrial Rope Access Back-Up Systems, in accordance with regulatory requirements and industry standards as listed below.

- OSHA 1910.140 (subpart I) & 1926.501
- ANSI/ASSP Z359.2-2023
- SPRAT: *Safe Practices for Rope Access Work* (sec. 12.1.1)
- IRATA: *International Code of Practice* (sec. 2.11.2.6)



KEY SYSTEM COMPONENTS

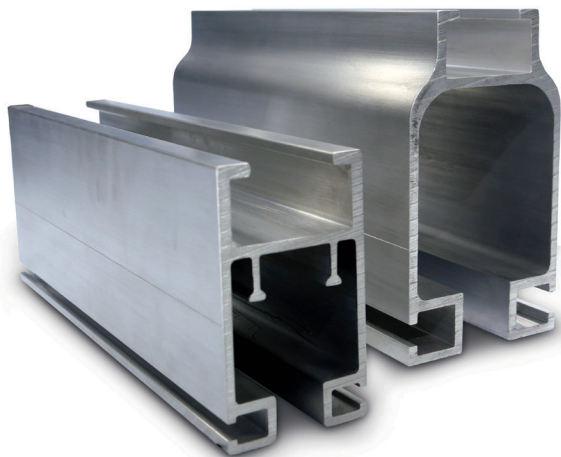


Uni-Life Track systems are designed to work with any overhead workstation configuration you have in place. We can also design a system to meet your exact application needs with configurations that include monorail and bridge/runway. These systems can be ceiling-mounted, free-standing, or on a jib arm or gantry.

All systems are comprised of the following integrated components designed to ensure optimal performance:

ALUMINUM RAIL ANCHOR SYSTEM

- Uni-Life Track uses industry-leading aluminum rail profiles, including Unified ETA-5 and ETA-8 models.
- Lightweight and durable, these rails feature an enclosed track that ensures a clean rolling surface at all times.



HANGERS AND END STOPS

- Depending on the connection point, the Uni-Life System has multiple hanger options for industrial and entertainment applications.
- All hangers include an 8-foot safety cable with rod ends to tie around the steel above in the event of a catastrophic failure



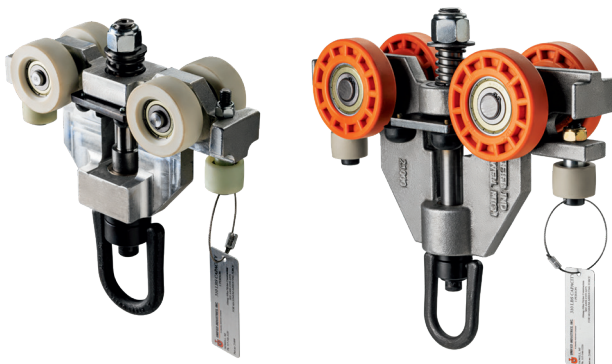
QUICK COUPLER
HANGER

BLOCK HANGER

ADJUSTABLE
BLOCK HANGER

TROLLEYS

- Uni-Life Track trolleys are designed for low rolling resistance, allowing it to track above the operator seamlessly.
- Trolley will engage when a fall occurs and the braking mechanism will prevent the worker from rolling into a dangerous area



ETA-5

ETA-8



LIFTING SOLUTIONS

Yale

CM

Duff-Norton

MAGNETEK

UNIFIED

STAHL
Crane Systems

USA

p: 800.888.0985
p: 716.689.5400
f: 716.689.5644

CAN

p: 877.264.6478
f: 877.264.6477

www.cmco.com/unified | CMCOPartners@cmworks.com